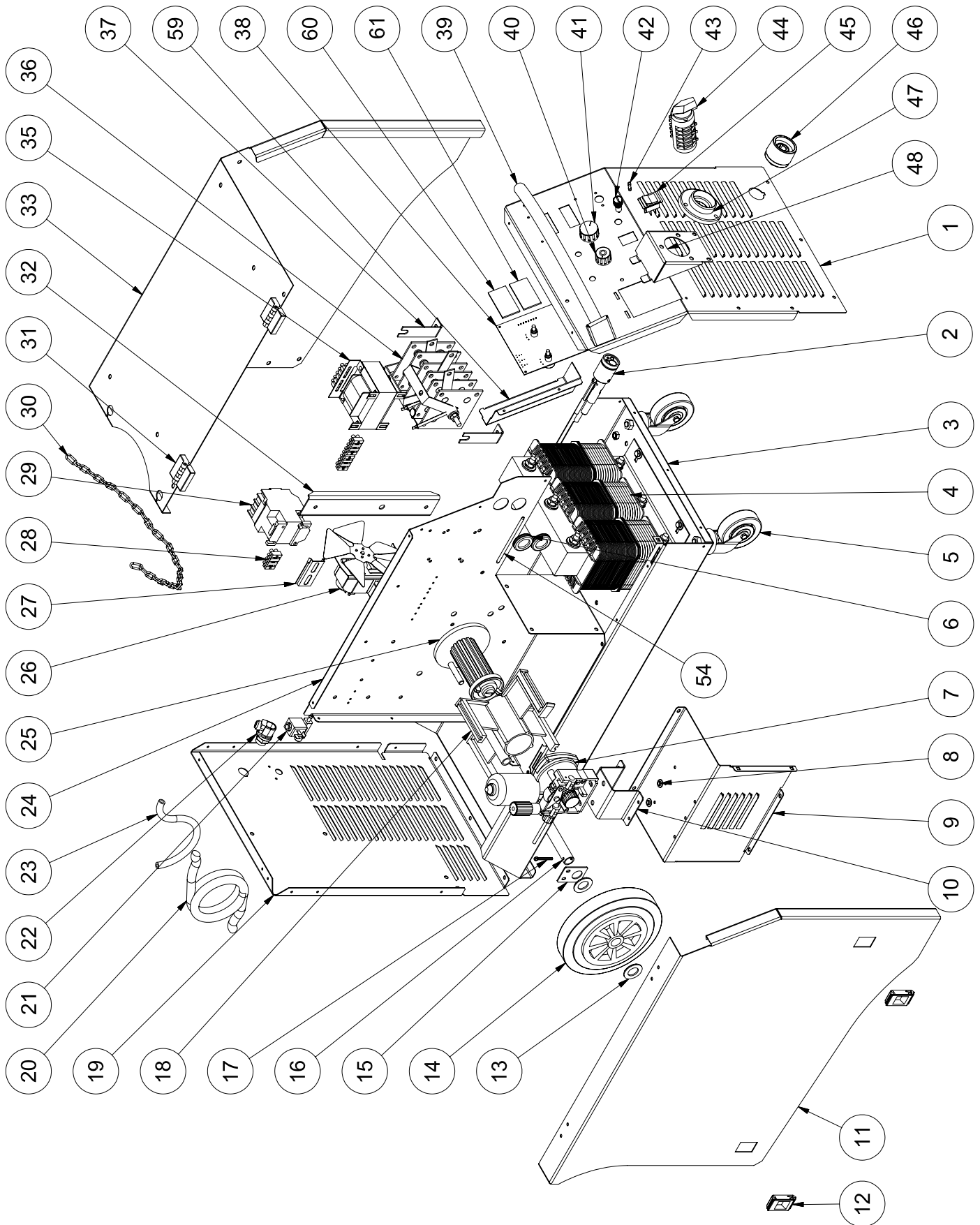


230/400V-50/60Hz





REPUESTOS. GALA MIG 2600
PARTS LIST. GALA MIG 2600
LISTE DES PIÈCES. GALA MIG 2600

REF: 438.00.000

04-07-11

HOJA:43800000 V2 2/2

230/400V-50/60Hz

| Nº | REF. | DESCRIPCION | DESCRIPTION | DESCRIPTION | V |
|-----|----------|----------------------------|--------------------------------|-------------------------------|----|
| 1 | 43883303 | FRENTE ANTERIOR | FRONT PART | PARTIE ANTÉRIEURE | V2 |
| 2 | 43802147 | CONECTOR ANTORCHA MIG | MIG TORCH CONNECTOR | CONNECTEUR TORCHE MIG | V1 |
| 3 | 43881001 | CHASIS | FRAME | CHÂSSIS | V2 |
| 4 | 43812015 | TRANSFORMADOR PRINCIPAL | MAIN TRANSFORMER | TRANSFORMATEUR PRINCIPAL | |
| 4.1 | 43812115 | BOBINA CORTA 230/400V | SHORT COIL 230/400V | BOBINE COURTE 230/400V | |
| 4.2 | 43812215 | BOBINA CENTRAL (230/400V) | CENTRAL COIL (230/400V) | BOBINE CENTRALE (230/400V) | |
| 4.3 | 43812315 | BOBINA LARGA 230/400V | LONG COIL 230/400V | BOBINE LONGUE 230/400V | |
| 5 | 49216042 | RUEDA GIRATORIA | ROTATING WHEEL | ROUE TOURNANTE | |
| 6 | 43016040 | PASAMUROS CIEGO | BLIND INSULATING BUSHING | BORNE PASSE-FIL AVEUGLE | |
| 7 | 43816020 | SISTEMA ARRASTRE | DRIVING SYSTEM | SYSTÈME D'ENTRAÎNEMENT | |
| 8 | 00532006 | ARANDELA AISLANTE | INSULATING WASHER | RONDELLE ISOLANTE | |
| 9 | 43800204 | CAJON PANEL | PANEL BOX | TIROIR DU PANNEAU | |
| 10 | 43810010 | SOPORTE MOTOR | MOTOR SUPPORT | SUPPORT MOTEUR | |
| 11 | 43881006 | LATERAL MOVIL | MOBILE SIDE | LATÉRAL MOBILE | V2 |
| 12 | 00315001 | CIERRE | LOCKING DEVICE | FERMETURE | |
| 13 | 00010014 | ARANDELA PLANA | FLAT WASHER | RONDELLE PLATE | |
| 14 | 45016025 | RUEDA FIJA | FIXED WHEEL | ROUE FIXE | |
| 15 | 43510207 | ARANDELA EJE | STEM WASHER | RONDELLE DE TIGE | |
| 16 | 43812008 | EJE | AXLE | AXE | |
| 17 | 00013019 | PASADOR | LOCK | GOUPILLE | |
| 18 | 80071005 | ADAPTADOR CARRETE HILO | WIRE REEL ADAPTER | ADAPTATEUR POUR BOBINE DE FIL | |
| 19 | 43810002 | FRENTE POSTERIOR | REAR PART | PARTIE POSTÉRIEURE | |
| 20 | 45712022 | CABLE ENTRADA | INPUT CABLE | CÂBLE D'ENTRÉE | |
| 21 | 43516011 | ELECTROVALVULA | SOLENOID VALVE | ÉLECTROVALVE | |
| 22 | 49216014 | PRENSAESTOPAS | STUFFING BOX | PRESSE-ÉTOUPE | |
| 23 | 43512018 | CONEXIÓN MAQUINA-GAS | MACHINE-GAS CONNECTION | BRANCHEMENT MACHINE-GAZ | |
| 24 | 43800304 | PANEL CENTRAL | MAIN BOARD | PANNEAU CENTRAL | V1 |
| 25 | 49216019 | SOPORTE CARRETE | REEL SUPPORT | SUPPORT POUR BOBINE | |
| 26 | 49216110 | VENTILADOR | FAN | VENTILATEUR | |
| 27 | 45710050 | REGLETA | STRIP | RÉGLETTE DE BORNES | |
| 28 | 43516015 | FICHA CONEXION | CONNECTION TERMINAL STRIP | BARRETTE DE CONNEXION | |
| 29 | 49406018 | CONTACTOR | CONTACTOR | CONTACTEUR | |
| 30 | 49216033 | CADENA | CHAIN | CHAÎNE | |
| 31 | 00313003 | BISAGRA | HINGE | CHARNIÈRE | |
| 32 | 43810013 | REFUERZO | REINFORCEMENT | RENFORT | |
| 33 | 43881005 | LATERAL FIJO | FIXED SIDE | LATÉRAL FIXE | V2 |
| 35 | 49216017 | TRANSFORMADOR AUXILIAR | AUXILIARY TRANSFORMER | TRANSFORMATEUR AUXILIAIRE | |
| 36 | 49406046 | RECTIFICADOR | RECTIFIER | REDRESSEUR | |
| 37 | 49216008 | SOPORTE RECTIFICADOR | RECTIFIER SUPPORT | SUPPORT REDRESSEUR | |
| 38 | 43516028 | PLACA ELECTRONICA CONTROL | ELECTRONIC CONTROL BOARD | PLAQUE ÉLECTRONIQUE DE | |
| 39 | 43812009 | ASA | HANDLE | POIGNÉE | |
| 40 | 63112006 | MANDO POTENCIÓMETRO | POTENTIOMETER CONTROL | COMMANDE POTENTIOMÈTRE | |
| 41 | 49416050 | MANDO POTENCIÓMETRO | POTENTIOMETER CONTROL | COMMANDE POTENTIOMÈTRE | |
| 42 | 49216026 | PORTAFUSIBLES | FUSE-HOLDER | PORTE-FUSIBLES | |
| 43 | 49216027 | FUSIBLE | FUSE | FUSIBLE | |
| 44 | 49216123 | CONMUTADOR | SWITCH | COMMUTEUR | |
| 45 | 00540004 | INTERRUPTOR | SWITCH | INTERRUPTEUR | |
| 46 | 47716035 | CONECTOR SOLDADURA | WELDING CONNECTOR | CONNECTEUR DE SOUDAGE | |
| 47 | 43816347 | PROTECCIÓN FRONTAL | FRONT SAFETY PROTECTION | PROTECTION FRONTALE | |
| 48 | 43810014 | PROTECCION SALIDA ANTORCHA | TORCH OUTPUT SAFETY PROTECTION | PROTECTION SORTIE TORCHE | |
| 54 | 63000014 | TUBO GUIA HILO | WIRE CONDUIT | GAINÉ GUIDE-FIL | V1 |
| 59 | 43800404 | CAJON PLACA | ELECTRONIC BOARD BOX | TIROIR DU PLAQUE ÉLECTRONIQUE | V1 |
| 60 | 42016030 | VISOR ROJO | RED SIGHT | VISEUR ROUGE | V1 |
| 61 | 42016031 | VISOR VERDE | GREEN SIGHT | VISEUR VERT | V1 |

| V | Nº | REF | → | REF | IMD |
|----|----|----------|---|----------|----------------|
| V1 | 2 | 43812047 | → | 43802147 | IMD-100419-1-2 |
| V1 | 24 | 43800104 | → | 43800304 | IMD-100419-1-2 |
| V1 | 54 | 63020014 | → | 63000014 | IMD-100419-1-2 |
| V1 | 59 | | | 43800404 | IMD-100419-1-2 |
| V1 | 60 | | | 42016030 | IMD-100419-1-2 |
| V1 | 61 | | | 42016031 | IMD-100419-1-2 |
| V2 | 1 | 43800303 | → | 43883303 | IMD-110704-2 |
| V2 | 3 | 43802001 | → | 43881001 | IMD-110704-2 |
| V2 | 11 | 43800006 | → | 43881006 | IMD-110704-2 |
| V2 | 33 | 43800005 | → | 43881005 | IMD-110704-2 |