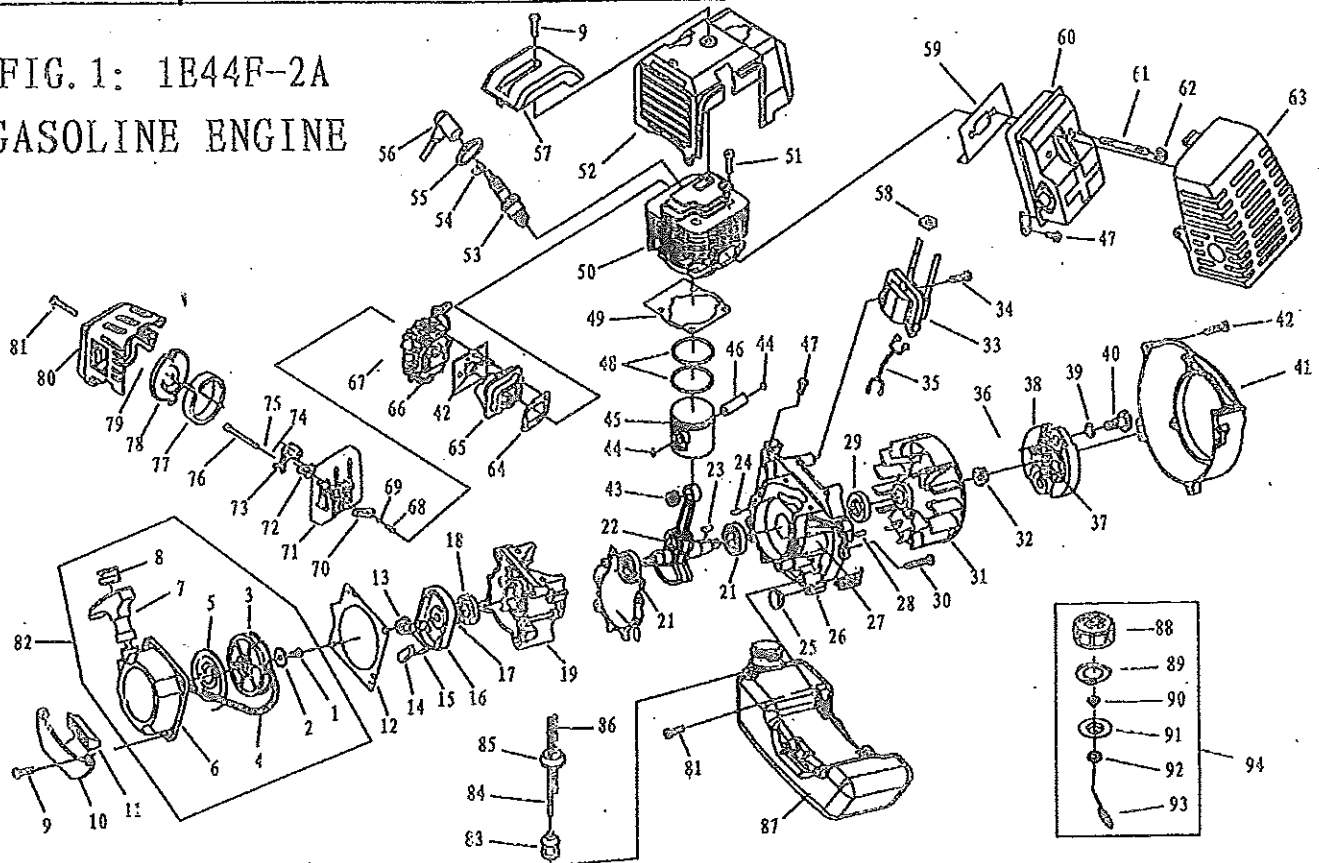


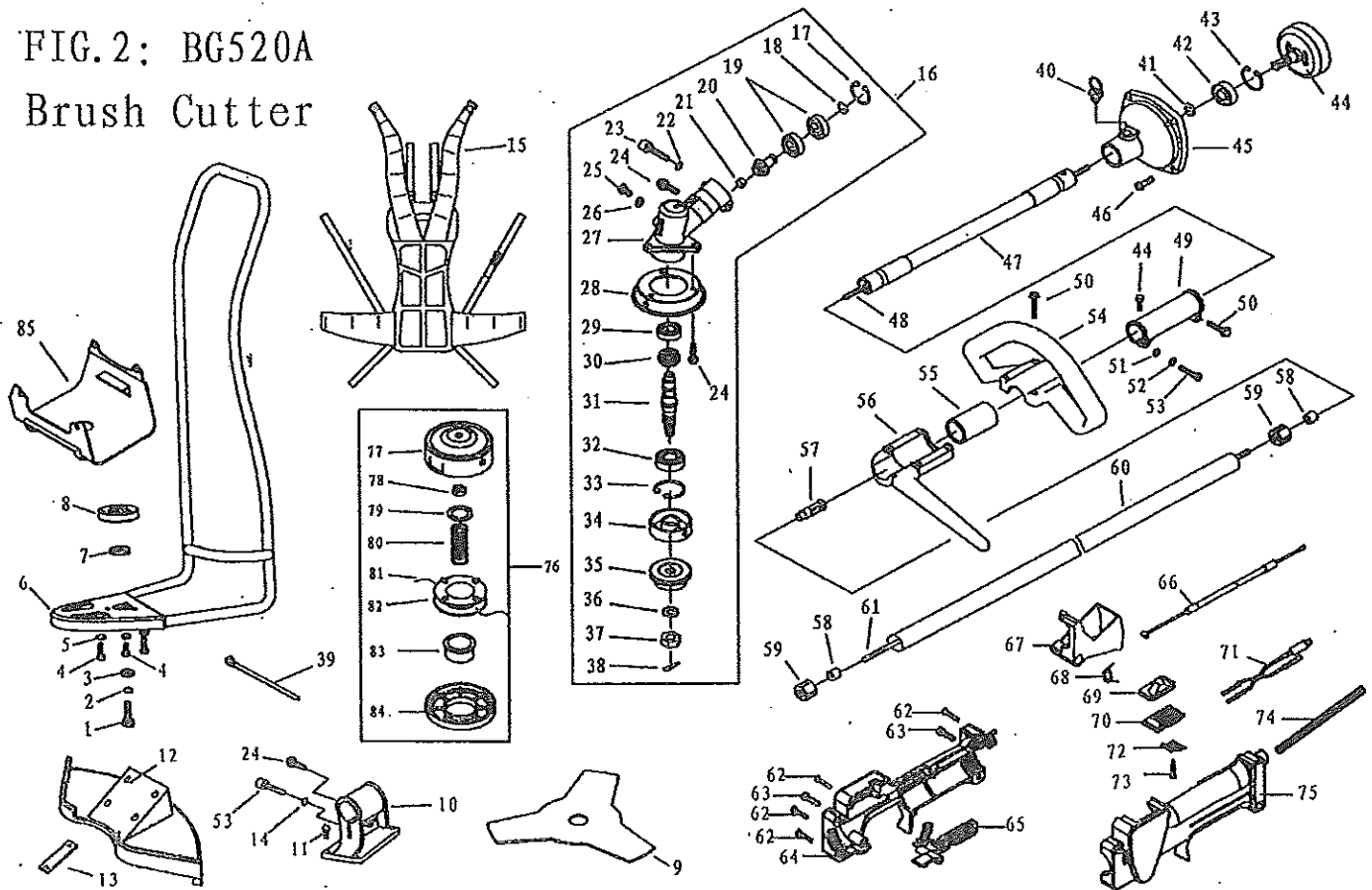
BG5204

FIG. 1: 1B44F-2A
GASOLINE ENGINE



| NO. | Part No. | Part Name | Qty. | No. | Part No. | Part Name | Qty. | No. | Part No. | Part Name | Qty. |
|-----|----------------|-----------------------|------|-----|----------------|-------------------|------|-----|----------------|---------------------|------|
| 1 | GB/T67 | Screw M5 × 12-9, 8-DZ | 1 | 33 | | Stator | 1 | 65 | 1B40F-5A.2 | Admitting Pipe | 1 |
| 2 | 1B40F-5.11-2 | Washer | 1 | 34 | GB/T9074.13 | Bolt M5 × 20 | 2 | 66 | 1B40F-5A-1 | Gasket | 1 |
| 3 | 1B40F-5.11-1 | Start Rope Reel | 1 | 35 | SG230-2 | Cord Comp. | 1 | 67 | 1B44F-2A.1 | Carburetor | 1 |
| 4 | | Rope | 1 | 36 | 1B36F-3 | Washer B | 2 | 68 | GB/T845 | Screw ST2.9 × 6.5 | 1 |
| 5 | 1B40FP-3Z.4-7 | Recoil Spring | 1 | 37 | 1B40F-5.6-1 | Spring | 1 | 69 | GB/T97.1 | Washer 3 | 1 |
| 6 | 1B40F-5.11.1 | Start Cover Ass'y | 1 | 38 | 1B40F-5.6.1 | Expander | 2 | 70 | 1B40F-5A.1.1-1 | Choke Handle | 1 |
| 7 | 1B40FP-3Z.4-2 | Start Handle | 1 | 39 | 1B40F-5-11 | Washer | 2 | 71 | 1B40F-5A.1.1.1 | Inside Cover | 1 |
| 8 | 1B40FP-3Z.4-10 | Ring | 1 | 40 | 1B40F-5-12 | Screw Pin | 2 | 72 | 1B40F-5A.1.1-2 | Choke | 1 |
| 9 | GB/T9074.4 | Screw M5 × 20 | 5 | 41 | 1B40F-5-9 | Fan Cover | 1 | 73 | 1B40F-5A.1.2 | Baffle | 1 |
| 10 | 1B40F-5A-4 | Stand | 1 | 42 | GB/T9074.13 | Bolt M5 × 25 | 4 | 74 | GB/T97.1 | Washer 5 | 2 |
| 11 | 1B40F-5A-2 | Rubber Cover | 1 | 43 | 1B44F-2A.2-3 | Bearing | 1 | 75 | GB/T93 | Washer 5 | 2 |
| 12 | 1B40F-5-10 | Gasket | 1 | 44 | 1B40F-03.02.01 | Ring | 2 | 76 | GB/T70.1 | Screw M5 × 55 | 2 |
| 13 | GB/T6170 | Nut M8 | 1 | 45 | 1B44F-2A.2-1 | Piston | 1 | 77 | 1B34F.1-1 | Filter Net | 1 |
| 14 | 1B46FP.4-2 | Start Claw | 1 | 46 | 1B44F-2A.2-2 | Piston Pin | 1 | 78 | 1B40F-5A.1-2 | Inside Cover | 1 |
| 15 | 1B36F.1.2-2 | Start Spring | 1 | 47 | GB/T9074.4 | Bolt M5 × 12 | 3 | 79 | GB/T3452.1 | O-Washer 3.15 × 1.8 | 1 |
| 16 | 1B40F-5.7-1 | Start Reel | 1 | 48 | 1B44F-2A.2-4 | Piston Ring | 2 | 80 | 1B40F-5A.1-1 | Outside Cover | 1 |
| 17 | GB/T896 | Stop Ring 4 | 1 | 49 | 1B40F-5-6 | Gasket | 1 | 81 | GB/T9074.4 | Screw M5 × 16 | 3 |
| 18 | 1B36F.2 | Oil-seal | 1 | 50 | 1B44F-2A-1 | Cylinder | 1 | 82 | 1B40F-5.11 | Starter | 1 |
| 19 | 1B40F-5.8-2 | Crank Case | 1 | 51 | GB/T70.1 | Screw M5 × 20 | 4 | 83 | 1B34F.9.2-3 | Cleaner Cover | 1 |
| 20 | 1B40F-5.8-4 | Gasket | 1 | 52 | 1B40F-5.5 | Guide Cover Ass'y | 1 | 84 | 1B40F-5A.4.2-2 | Fuel Pipe | 1 |
| 21 | GB/T276 | Bearing 6202/P5 | 2 | 53 | L6 (LD) | Spark Plug | 1 | 85 | 1B36FP.8.1-1 | Plug | 1 |
| 22 | 1B44F-2A.2.1 | Crank Shaft | 1 | 54 | | Spring | 1 | 86 | 1B40F-5A.4.2-1 | Fuel Pipe | 1 |
| 23 | GB/T1099 | Key 3 × 13 | 1 | 55 | | Plug Cap | 1 | 87 | 1B40F-5A.4.1 | Fuel Tank | 1 |
| 24 | GB/T119 | Pin B5 × 12 | 2 | 56 | | Cap | 1 | 88 | 1B32FL.6.2-1 | Fuel Tank Lid | 1 |
| 25 | 1B40F-5A.4.2-1 | Rubber Washer | 2 | 57 | 1B40F-5-8 | Cover | 1 | 89 | CG420.1.3.1-2 | Gasket | 1 |
| 26 | 1B40F-5.8-1 | Crank Case | 1 | 58 | 1B40F-5.3-1 | Plug | 1 | 90 | BB415.4.1.1-1 | Inlet | 1 |
| 27 | 1B40F-5.8-3 | Guide Cover | 1 | 59 | 1B40F-5-5 | Gasket | 1 | 91 | 1B32FL.6.2-2 | Inside Cover | 1 |
| 28 | GB/T119 | Pin B4 × 10 | 2 | 60 | 1B40F-5.2 | Muffler | 1 | 92 | 1B32FL.6.2-3 | Lid | 1 |
| 29 | 1B40F-5.9 | Oil-seal | 1 | 61 | 1B40F-5-13 | Bolt | 2 | 93 | 1B32FL.6.2-4 | Chain | 1 |
| 30 | GB/T9074.4 | Screw M5 × 30 | 4 | 62 | GB/T6177.1 | Nut M6 | 2 | 94 | 1B32FL.6.2 | Fuel Tank Lid COMP. | 1 |
| 31 | | Fly Wheel | 1 | 63 | 1B40F-5-7 | Muffler Cover | 1 | | | | |
| 32 | GB/T6177.1 | Nut M8 | 1 | 64 | 1B40F-5-2 | Admitting Pipe | 1 | | | | |

FIG. 2: BG520A
Brush Cutter



| NO. | PART NO. | PART NAME | QTY. | NO. | PART NO. | PART NAME | QTY. | NO. | PART NO. | PART NAME | QTY. |
|-----|---------------|----------------------|------|-----|--------------|----------------------|------|-----|--------------|-------------------|------|
| 1 | GB/T5783 | BOLT 8×20-8.8 | 1 | 30 | BG-328.9.5-2 | GEAR | 1 | 59 | BG-328.9.4-5 | RUBBER COVER | 6 |
| 2 | GB/T859 | WASHER 8 | 1 | 31 | CG305F.1-1 | GEAR SHAFT | 1 | 60 | BG415-CE.1-1 | ALUMINIUM PIPE | 1 |
| 3 | GB/T96 | WASHER 8 | 1 | 32 | GB/T276 | BEARING 6002/P5 | 1 | 61 | BG305.12.2-2 | DRIVE SHAFT | 1 |
| 4 | GB/T5783 | BOLT M6×16-8.8 | 3 | 33 | GB/T893.2 | STOP RING 32 | 1 | 62 | GB/T845 | Screw ST3.5×19 | 4 |
| 5 | GB/T859 | WASHER 6 | 3 | 34 | BG305.12.4-5 | GEAR WASHER | 1 | 63 | GB/T70.1 | Screw M5×18 | 2 |
| 6 | BG431.1.1 | SHOULDER FRAME COMP. | 1 | 35 | CG305F.1-3 | HOLDER | 1 | 64 | SG230.1-1 | Box, Right | 1 |
| 7 | GB/T276 | BEARING 6002-2Z/P6 | 1 | 36 | GB/T862.1 | WASHER 10 | 1 | 65 | SG230.1-4 | Safety Lever | 1 |
| 8 | BG431.1-1 | BEARING HOLDER | 1 | 37 | CG305F.1-4 | NUT | 1 | 66 | BG520A.2.1 | Cable Comp. | 1 |
| 9 | CG420-2 | BLADE | 1 | 38 | GB/T91 | PIN 2×16 | 1 | 67 | SG230.1-5 | Throttle Lever | 1 |
| 10 | CG330B-CE.1.1 | BRACKET COMP. | 1 | 39 | BG415-1 | WIRE CLAMP BAND | 2 | 68 | SG230.1-6 | Spring | 1 |
| 11 | GB/T9074.4 | SCREW M5×16 | 1 | 40 | BG305.2.1 | PIN | 1 | 69 | SG230.1.2-3 | Stop Switch | 1 |
| 12 | CG330B-CE.1-1 | SAFETY GUARD | 1 | 41 | GB/T894.1 | STOP RING 15 | 1 | 70 | SG230.1.2-2 | Guide Seat | 1 |
| 13 | CG330B-CE.1.2 | BRACKET BOARD COMP. | 2 | 42 | GB/T276 | BEARING 6202-2RS/P5 | 2 | 71 | BG520A.2.2-1 | Stop Line | 1 |
| 14 | GB/T848 | WASHER 5 | 2 | 43 | GB/T893.1 | STOP RING 35 | 1 | 72 | SG230.1.2-1 | Touch Reed | 1 |
| 15 | BG431.2 | SHOULDER BELT ASS'Y | 1 | 44 | BG-328.8.1 | CLUTCH DRUM COMP. | 1 | 73 | GB/T845 | Screw ST2.9×13 | 1 |
| 16 | BG305.12.4 | GEAR CASE ASS'Y | 1 | 45 | BG430.2.1-1 | CLUTCH CASE | 1 | 74 | BG520A.2-1 | Tube | 1 |
| 17 | GB/T893.2 | STOP RING 26 | 1 | 46 | GB/T9074.13 | SCREW M6×20 | 4 | 75 | SG230.1-2 | Box, Left | 1 |
| 18 | GB/T894.1 | STOP RING 10 | 1 | 47 | BG305.1.2 | FLEXIBLE LINER COMP. | 1 | 76 | CG305F.8 | Nylon Cutter Head | 1 |
| 19 | GB/T276 | BEARING 6000-2RS/P5 | 2 | 48 | BG305.1.1 | FLEXIBLE SHAFT COMP. | 1 | 77 | CG305F.8.1 | Case | 1 |
| 20 | CG305F.1-2 | PINION | 1 | 49 | BG305D-2 | JOINT PIPE | 1 | 78 | CG305F.8-4 | Left Nut | 1 |
| 21 | CG415.3-1 | STEEL PLATE CAP | 1 | 50 | GB/T9074.4 | SCREW M5×30 | 5 | 79 | CG305F.8-5 | Washer | 1 |
| 22 | GB/T93 | WASHER 6 | 1 | 51 | GB/T97.1 | WASHER 5 | 2 | 80 | CG305F.8-3 | Spring | 1 |
| 23 | GB/T70.1 | SCREW M6×20 | 1 | 52 | GB/T93 | WASHER 5 | 2 | 81 | | Cord | 2 |
| 24 | GB/T9074.4 | SCREW M5×12 | 6 | 53 | GB/T70.1 | SCREW M5×20 | 2 | 82 | CG305F.8-1 | Cord Holder | 1 |
| 25 | GB/T29.2 | BOLT M6×12 | 1 | 54 | BG330-CE.1-1 | HANDLE | 1 | 83 | CG305F.8-7 | Platen | 1 |
| 26 | GB/T97.1 | WASHER 6 | 1 | 55 | BG330-CE.1-2 | RUBBER COVER | 1 | 84 | CG305F.8-2 | Cover | 1 |
| 27 | BG305.12.4-4 | GEAR CASE | 1 | 56 | BG330-CE.1.1 | HANDLE COVER | 1 | 85 | BG520A.1.1 | WHIRLABOUT | 1 |
| 28 | BG305.12.4-9 | SAFETY GUARD | 1 | 57 | BG-328.9.4-1 | ADAPTER COMP. | 1 | | | | |
| 29 | GB/T276 | BEARING 6000/P5 | 1 | 58 | BG-328.9.4-4 | OIL-BEARING | 6 | | | | |