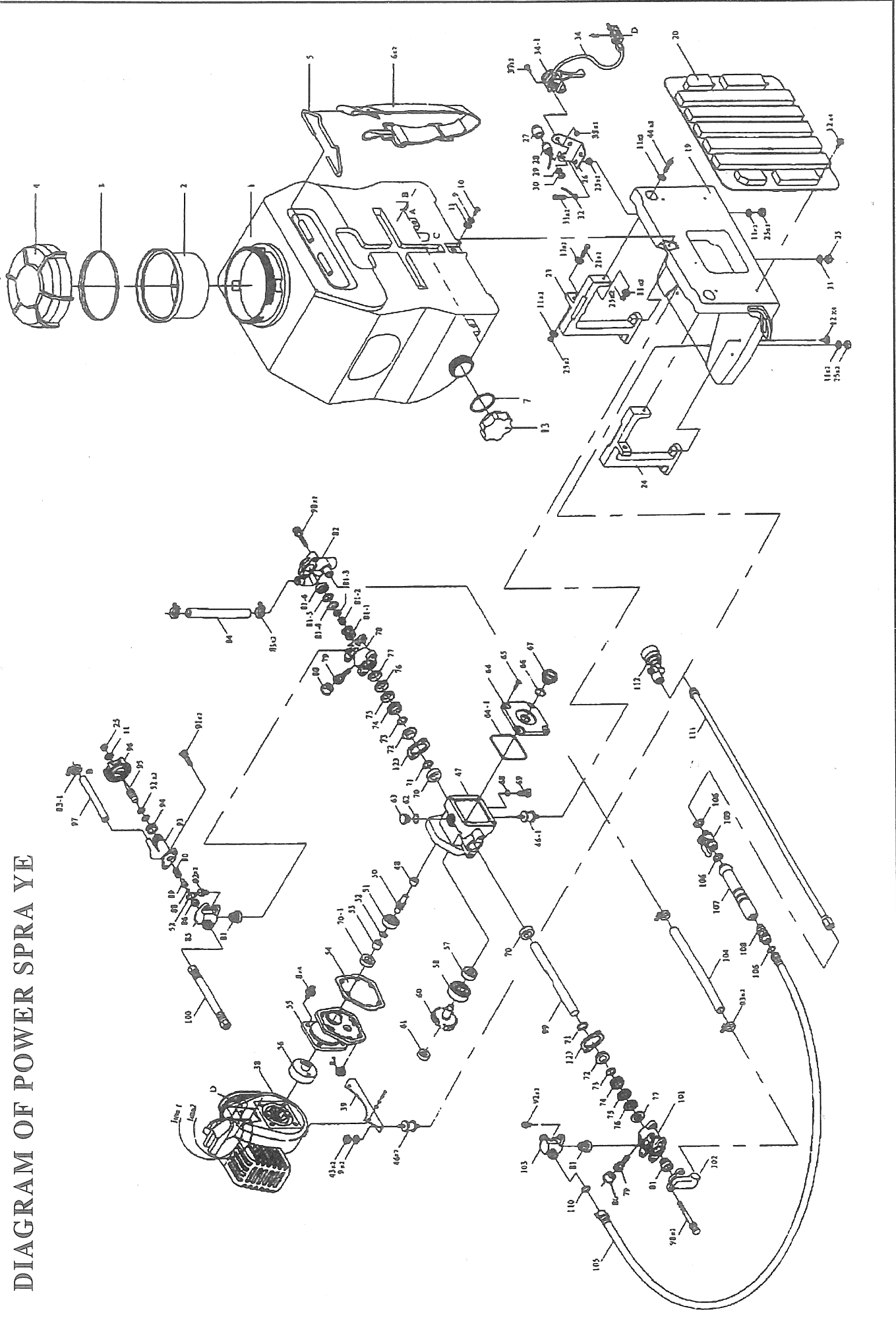


BOMBA PULVERIZADOR

DIAGRAM OF POWER SPRA YE



KNAPSACK POWER SPRAYER PART LISTS

NO. PART NAME

1.	Chemical container	56.	Drum clutch	99.	Plunger
2.	Filter	57.	Bearing	100.	High pressure hose
3.	Gasket	58.	Bearing	101.	Cylinder
4.	Container cover	59.	Gear shaft	102.	Suction chamber
5.	Chain holder	60.	Gear	103.	Outlet chamber
6.	Strap	61.	Bearing	104.	Suction hose
7.	Gasket	62.	O-ring	105.	High pressure hose
8.	Screw	63.	Oil inlet cup	106.	Packing
9.	Spring washer	64.	Crand case cover	107.	Hose pipe handle
10.	Screw	64-1.	O-ring	108.	Roller
11.	Washer	65.	Screw	119.	Ball cock
12.	Screw	66.	O-ring	110.	Packing
13.	Drain cup	67.	Oin glass	111.	Spray rod
19.	Frame	68.	O-ring	115.	Nozzle (4 hole)
20.	Pad	69.	Drain plug	123.	Fixed plane
21.	Screw	70.	Oil seal		
23.	Right stand	70-1.	Oil seal		
24.	Left stand	71.	O-ring		
25.	Nylon nut	72.	Adjusting ring		
26.	Fixed plate	73.	Grease ring		
31.	Screw	74.	V-packing upper seal		
32.	Cord comp	75.	V-packing		
33.	Washer	76.	V-packing(fabric)		
34.	Cable comp	77.	Packing seat		
34-1.	Flex accelerator	78.	Cylinder		
35.	Nylon nut	79+80.	Grease cup		
37.	Screw	81.	Valve Ass'y		
38.	Engine	82.	Suction chamber		
39.	Engine stand	83.	Clip-L		
40.	Washer	83-1.	Clip-S		
41.	Spring washer	84.	Suction hose		
42.	Screw	85.	Outlet chamber		
43.	Nut	86.	Valve seat		
46.	Joint-s	88.	Pressure valve		
46-1.	Joint-L	89.	Pressure valve rod		
47.	Crank case	90.	Spring		
48.	Bearing	91.	Screw		
50.	Shaft	93.	Relief valve Ass'y		
51.	Bearing	94.	Nut		
52.	O-ring	95.	Pressure valve screw		
53.	Steel pipe	96.	Pressure adjusting		
54.	Gasket	97.	Overflow hose		
55.	Drum case	98.	Screw		